

General Rubbish (Black) Bin

Most things that don't go in the recycling bins can go in the Black Rubbish Bin.



Broken crockery



Food pouches



Nappies



Pet waste



Vacuum dust and sweepings



Broken toys



Polystyrene



Glassware and Pyrex



Sheet glass

For other items not listed, please check the FAQ booklet or visit suffolkrecycling.org.uk



The type of bin may differ from that shown. Always refer to the signage you should find in the bin store or on the bins.

NEVER PUT ANY BATTERY IN ANY BIN

WARNING! Batteries of any kind, including vapes, should **NEVER** go in the recycling or rubbish bins as they are a fire hazard. Take them to a recycling centre or battery recycling point located in most supermarkets and electrical retailers.



Watch the video!

We've made a short film about the new recycling services. Scan the QR code to watch or visit suffolkrecycling.org.uk



The new recycling and waste service is designed to make it easier for us all to recycle more. Recycling reduces energy, cuts emissions and preserves natural resources. Recycling is also cheaper than disposal so it benefits the economy too. To find out more about recycling and other waste reduction measures, please visit: suffolkrecycling.org.uk



You can keep up to date by following us on social media; search for [@suffolkrecycles](https://www.instagram.com/suffolkrecycles)

Get in touch! If you have any questions or need assistance, please get in touch. We can also provide information in different formats, such as large print, audio, Braille and in different languages.

West Suffolk Council

01284 757320
customer.services@westsuffolk.gov.uk
www.westsuffolk.gov.uk

Suffolk recycles

This leaflet has been designed and produced by mobiusagency.org.uk, printed sustainably in Suffolk by Kingfisher Press on paper made from 75% recycled pulp and 25% virgin pulp sourced from sustainable forests where a minimum of three new trees are planted for every one felled. The inks used are vegetable oil based and production adheres to ISO14001 environmental accreditation. Please recycle it when you're done with it.

Suffolk recycles

Better Recycling
 IS COMING TO WEST SUFFOLK



How to use your new **Recycling and Waste Service**

Starting June 2026

The Blue or Blue-Lidded Bin



Plastic pots, tubs, food trays and thin cover film



Plastic bottles



Plastic bags, film and wrapping



Glass bottles and jars



Drinks cartons (Tetra Pak)



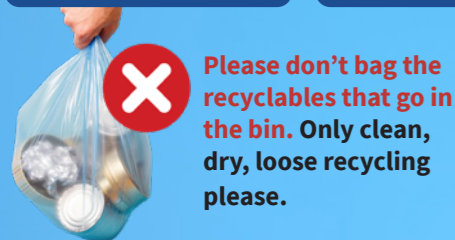
Metal cans and empty aerosols



Tin foil and foil food trays



The type of bin may differ from that shown. Always refer to the signage you should find in the bin store or on the bins.



✗ Please don't bag the recyclables that go in the bin. Only clean, dry, loose recycling please.

✓ You can leave labels, lids and nozzles on!
✗ Please ensure there's no food remnants on or in any of the recyclables.

! ONLY the items listed above must go in the Blue or Blue-Lidded Bin. **!**

The Green or Green-Lidded Bin



The type of bin may differ from that shown. Always refer to the signage you should find in the bin store or on the bins.



Books - hardback and softback



Newspapers and magazines



Cardboard boxes (please flatten first)



Cardboard packaging



Shredded paper (wrapped in paper)



Letters, envelopes and other paper

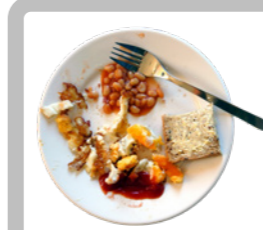


✗ Sorry but we can't collect paper or cardboard that contains remnants of food waste, oil or grease. Put any food waste in the food waste caddies and the spoiled paper or cardboard in the black bin.

✓ You can leave the transparent windows in envelopes attached.

! ONLY the items listed above must go in the Green or Green-Lidded Bin. **!**

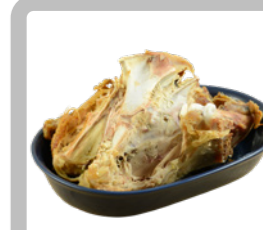
The Food Waste Caddy



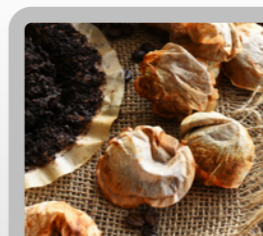
Leftovers



Fruit and veg; peelings and cores



Meat, fish & bones; cooked or uncooked



Coffee grounds and tea bags



Egg shells, cheese and salad



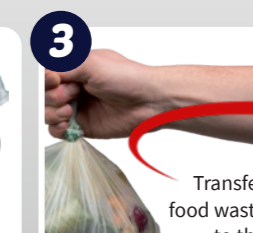
Out of date / mouldy food



1 We recommend lining the smaller caddy. Liners can be purchased from supermarkets but you can use carrier bags if you prefer (but not black bags).



2 Keep the small caddy inside to store food waste during the day.



3 Transfer food waste to the larger food waste bin outside.



4 The type of bin may differ. Always check the signage on the bins.

✗ No packaging of any kind, no oils, liquid fats, milk or other liquids go in the caddies.

